

## HardTop Mat

HardTop mouse mats are the original and best mouse mat, the best selling mouse mat in Europe.

Everlasting under-surface print combined with a non slip foam base provides exceptional value for money.

This mat will last almost indefinitely. A selection of standard shapes are available. Mouse mats feature a large print area for branding and promotional messages.



## Key Product Information

Product Code:	11001
Commodity Code:	3926100000
MOQ:	100
Size:	See Artwork Requirements
Available Thickness:	3mm or 5mm
Branding Area:	Within dimensions
Branding Method:	Screen Print or 4 Colour Process
Material:	PVC laminated to a foam base
Made In:	UK
PDF Proof:	24-48 Hours
Express Service	48 Hour
Available:	
Printed Proof Leadtime:	3 Working days
Leadtime:	10 Working days from proof approval
Colour:	N/A
Weight:	44g

## Packaging and Other Information

No Per Carton:	500
Packaging Details:	443 x 520 x 545mm
Carton Weight:	22Kg
Standard Packaging:	Bulk Packed
Alternative Packaging:	Mailing Sleeves, Shrink Wrapped, Bag with Header Card, Envelope

## Recommendations and Limitations

Please note that the MOQ for 5mm thick foam is 3,500 with a lead-time of 15 days from proof approval.

Suitable for all kinds of mice. Lasts much longer than paper laminated mats; a minimum of 12 months.

Ideal For: Postal Campaigns, IT Companies, Educational Organisations, Pharmaceutical, Recruitment

## HardTop Mat

Sizes available: Rectangle 200mm x 235mm, Square 200mm x 200mm, Oval 200mm x 235mm, Circle 200mm diameter, House 230mm x 195mm, Heart 200mm x 235mm, Phone 233mm x 185mm, T-Shirt 220mm x 200mm, Truck 200mm x 210mm, Hexagon 230mm x 200mm, Laptop 200mm x 235mm, Pillow 200mm x 235mm

### Screen Print:

- Editable EPS file
- Image saved at 100% size or larger
- Pantone® references supplied for colours
- Fonts supplied or text saved as curves

### Full colour:

- All graphics should be supplied as high resolution CMYK files at a minimum of 300dpi
- All design components must be supplied and clearly identified. This includes Tiff, EPS and PDF files; all printer fonts used in the main file & imported graphics.

### Regardless of print method:

- Allow 10mm bleed all around the design.
- Artwork to be emailed with your order number and company name in the reference line or supplied on CD with same information clearly labelled.

Full detailed guidelines including limitations & recommendations are available for each printing method on request.

QR Codes - Please note that the print process and substrates used in the production of this item may not always allow QR codes, if present on your artwork, to function correctly. When approving your proof, you are accepting that this may be the case and as such accept full liability for any malfunction of the QR code.

Please note that to provide you the highest quality product, offering you exceptional value for money, we print your design straight on to the under surface of our tough mark resist top material and laminate directly to a foam base. This makes our patent protected HardTop mouse mats virtually indestructible under normal use. This can mean that if you have large areas of solid white in your designs, whites will appear duller than if you opt for a paper laminated mat where the white of the paper will represent the white areas. Paper laminated mouse mats are not as durable as our bestselling HardTop mats. If you need help choosing the right product for your client's design please feel free to contact our sales team who will be able to offer advice.

See the following page(s) for the artwork templates for this product.

All information correct at time of publication. Whilst we endeavour to maintain the accuracy of this document, details may change without notice.

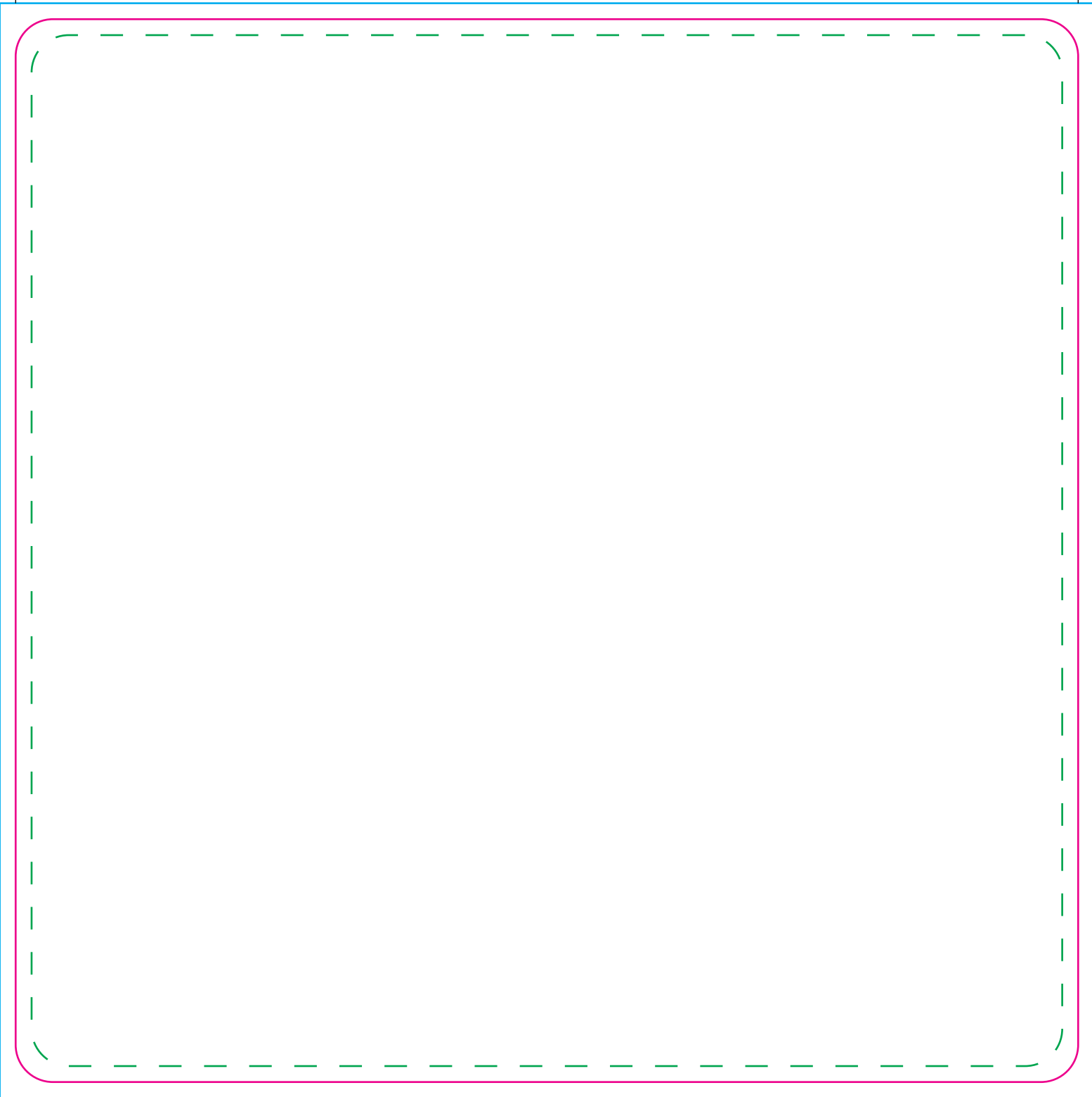


**Standard Mat**

<b>Tool No:</b>	235
<b>Shape:</b>	Rectangle
<b>Cut Size -</b>	
<b>Width:</b>	235mm
<b>Height:</b>	200mm
<b>Artwork with Bleed -</b>	
<b>Width:</b>	241mm
<b>Height:</b>	206mm

**--- Please keep all live matter such as text, logos and other important images within this area.**

**This dieline represents a current finishing tool. Any alterations to this dieline may incur additional charges.**



## Mat

**Tool No:** 867 & DC0006

**Shape:** Square

**Cut Size -**

**Width:** 200mm

**Height:** 200mm

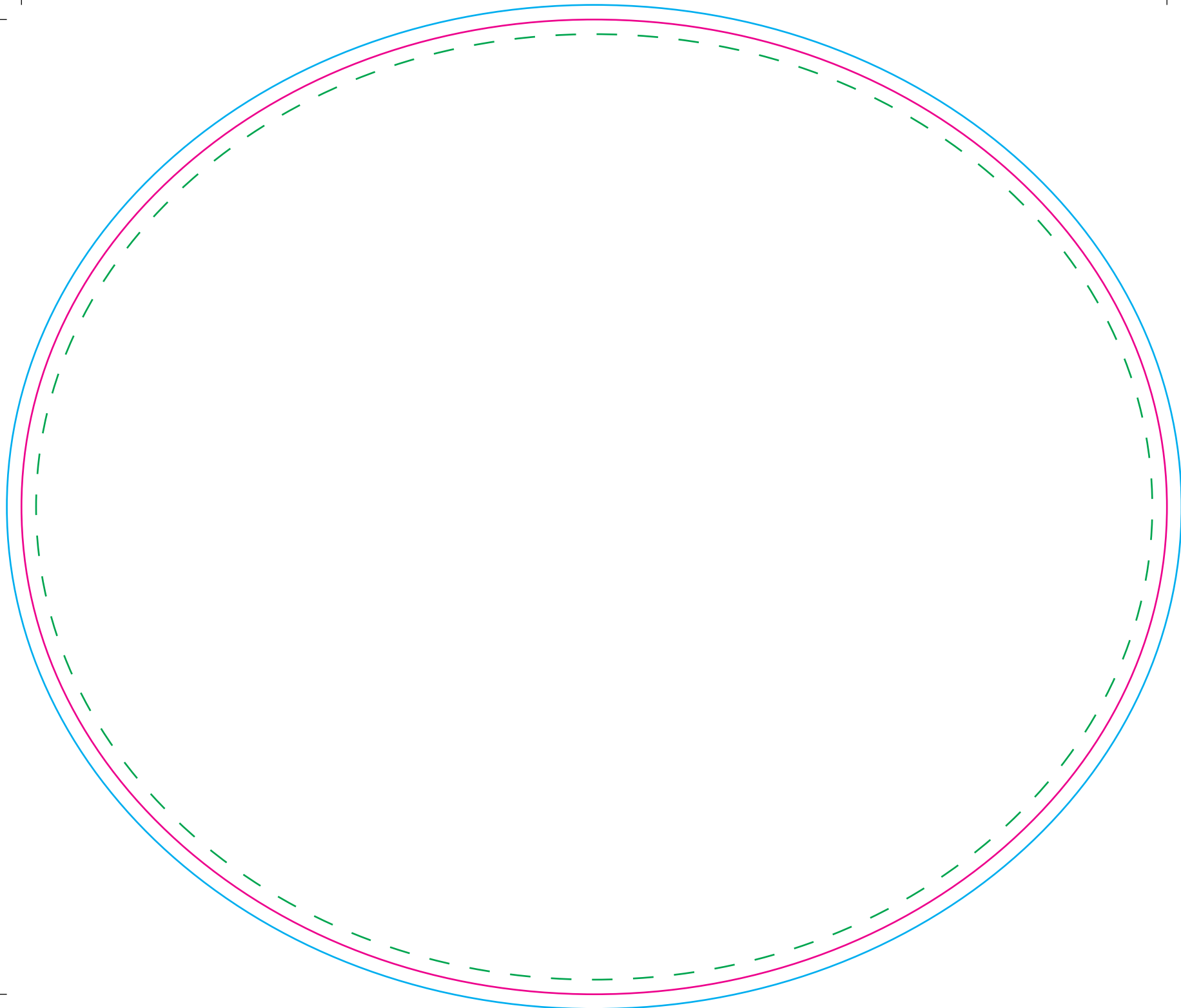
**Artwork with Bleed -**

**Width:** 206mm

**Height:** 206mm

- - - Please keep all live matter such as text, logos and other important images within this area.

**This dieline represents a current finishing tool. Any alterations to this dieline may incur additional charges.**

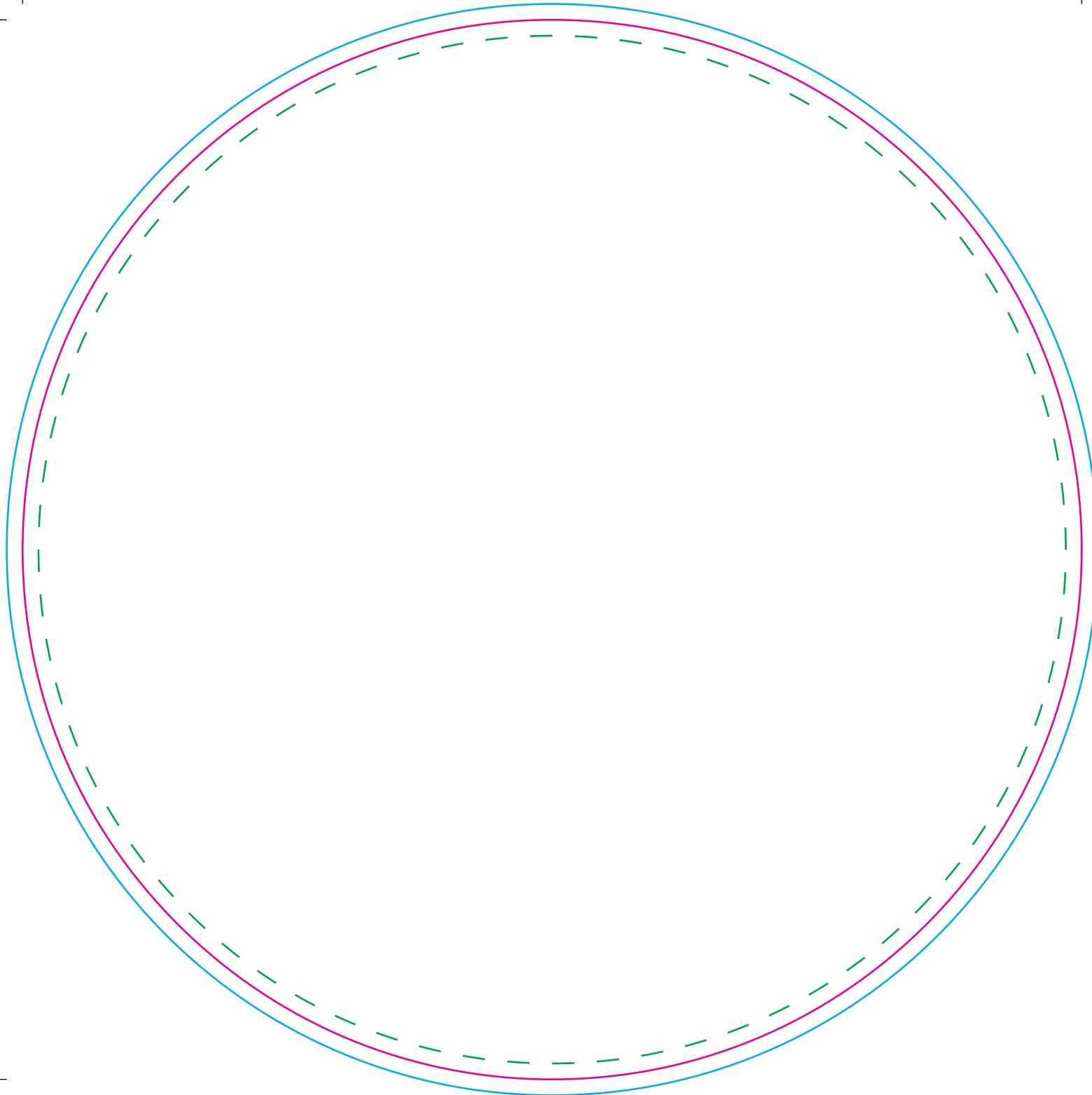


**Mat**

<b>Tool No:</b>	1090 & DC0173
<b>Shape:</b>	Oval
<b>Cut Size -</b>	
<b>Width:</b>	235mm
<b>Height:</b>	200mm
<b>Artwork with Bleed -</b>	
<b>Width:</b>	241mm
<b>Height:</b>	206mm

--- Please keep all live matter such as text, logos and other important images within this area.

**This dieline represents a current finishing tool. Any alterations to this dieline may incur additional charges.**



## Mat

**Tool No:** 862 & DC0005

**Shape:** Circle

**Cut Size -**

**Width:** 200mm

**Height:** 200mm

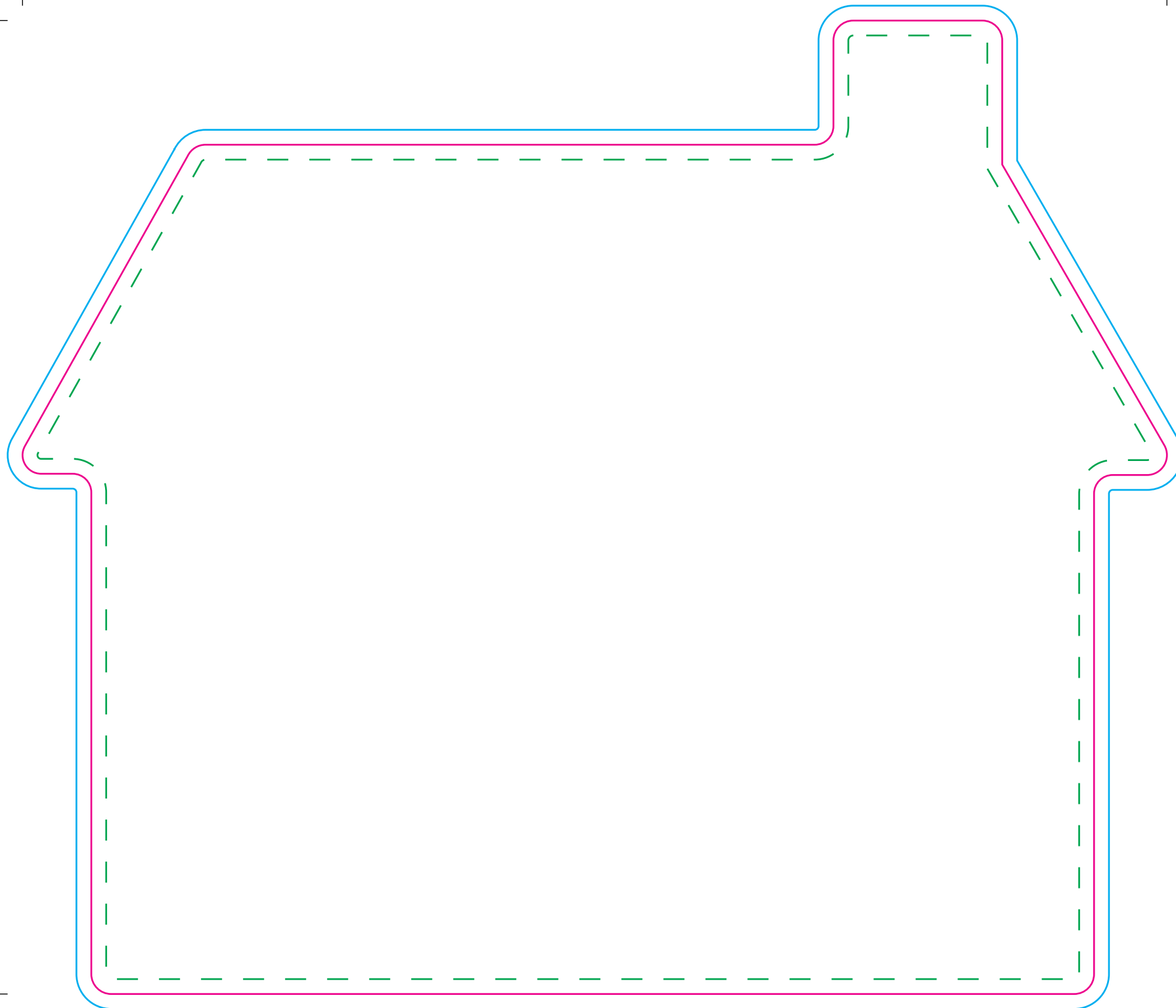
**Artwork with Bleed -**

**Width:** 206mm

**Height:** 206mm

**- - - Please keep all live matter such as text, logos and other important images within this area.**

**This dieline represents a current finishing tool. Any alterations to this dieline may incur additional charges.**



## Mat

**Tool No:** 3591 & DC0221  
**Shape:** House - Chimney Right

**Cut Size -**

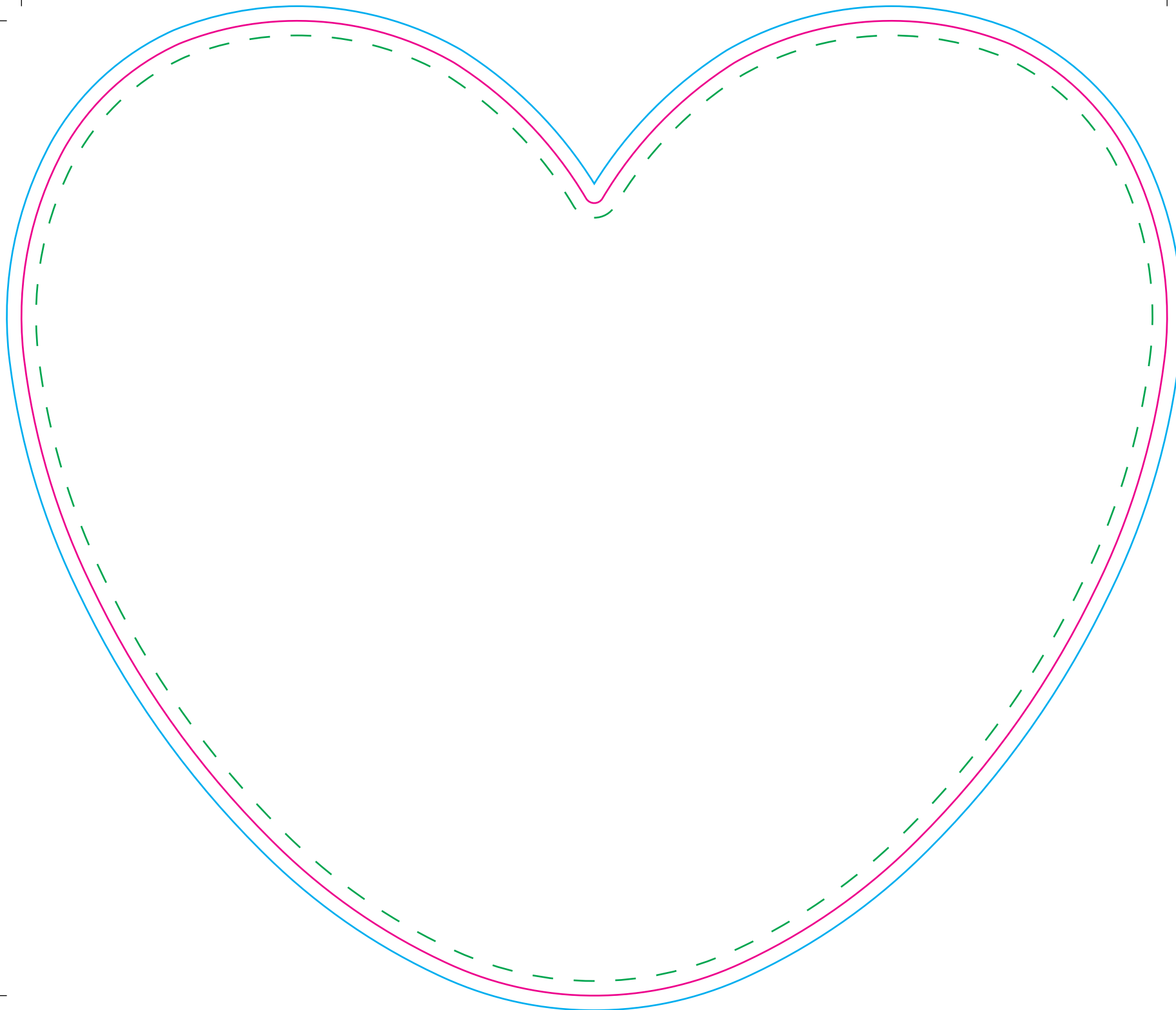
**Width:** 230.5mm  
**Height:** 196mm

**Artwork with Bleed -**

**Width:** 236.5mm  
**Height:** 202mm

--- Please keep all live matter such as text, logos and other important images within this area.

This dieline represents a current finishing tool. Any alterations to this dieline may incur additional charges.



## Mat

**Tool No:** 3489 & DC0312

**Shape:** Heart

**Product Size -**

**Width:** 235mm

**Height:** 200mm

**Artwork with Bleed -**

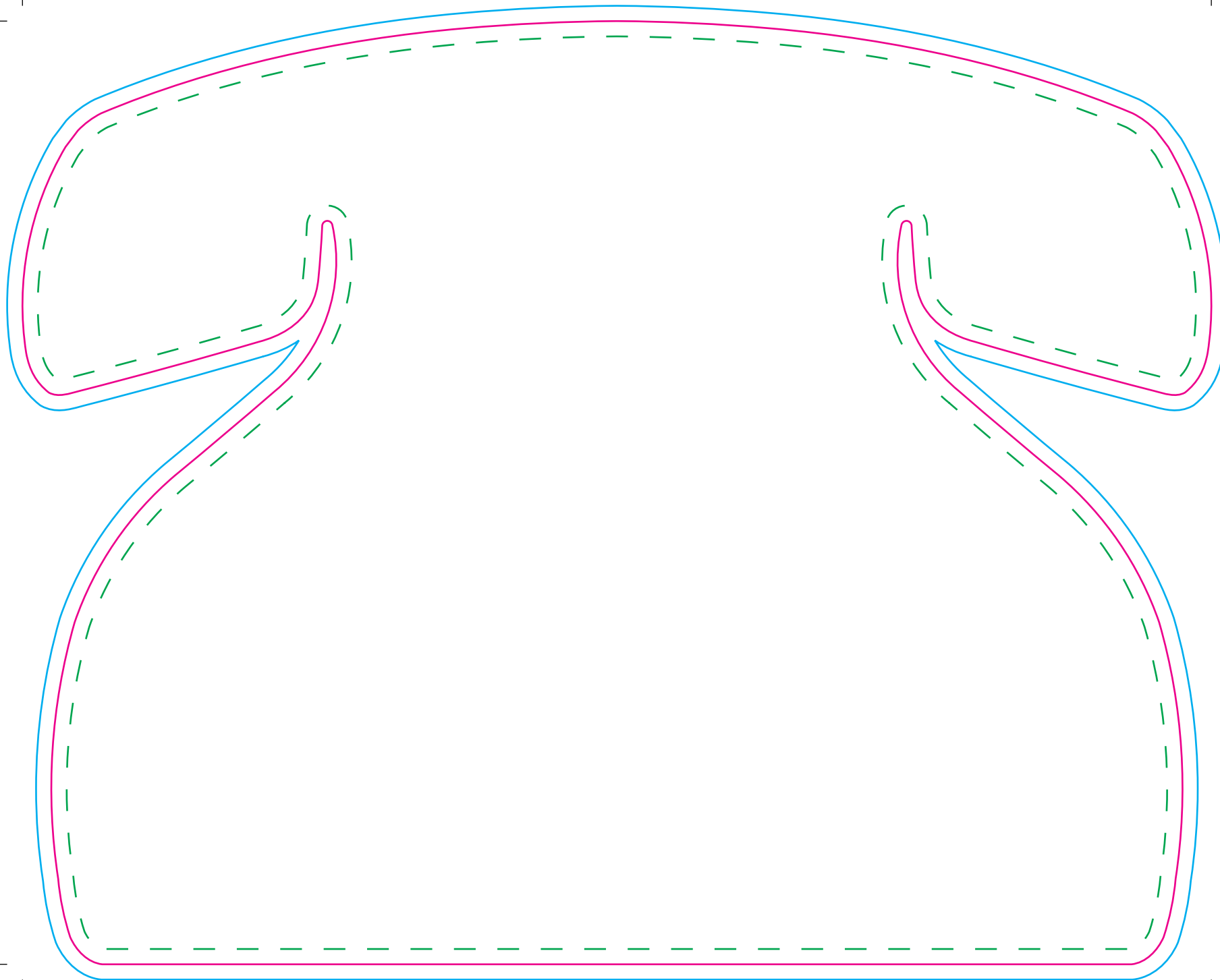
**Width:** 241mm

**Height:** 206mm

--- Please keep all live matter such as text, logos and other important images within this area.

**This dieline represents a current finishing tool. Any alterations to this dieline may incur additional charges.**





## Mat

**Tool No:** 2423 & DC0067

**Shape:** Telephone

**Cut Size -**

**Width:** 233mm

**Height:** 185mm

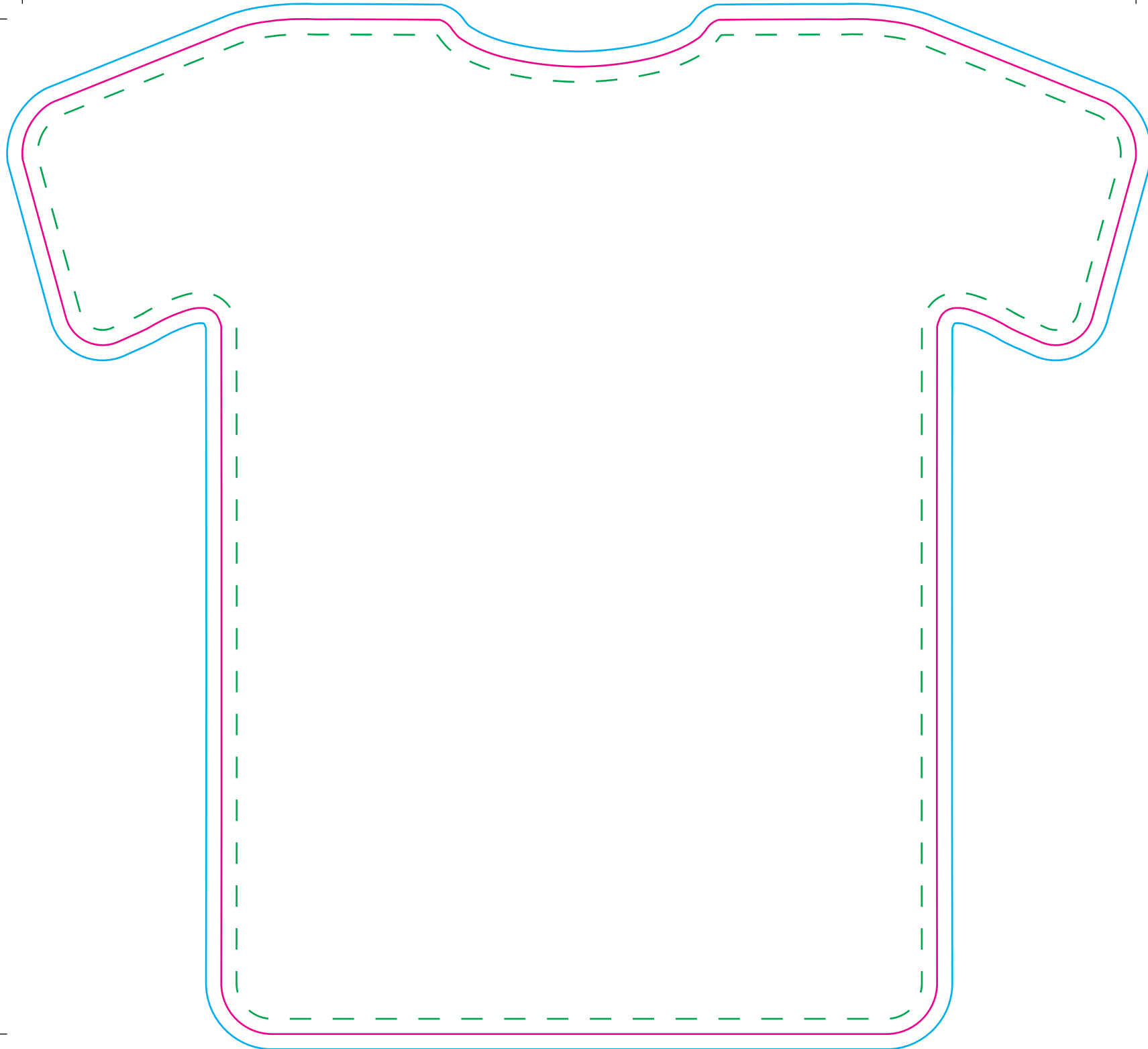
**Artwork with Bleed -**

**Width:** 239mm

**Height:** 191mm

- - - Please keep all live matter such as text, logos and other important images within this area.

**This dieline represents a current finishing tool. Any alterations to this dieline may incur additional charges.**



## Mat

**Tool No:** 3375 & DC0056

**Shape:** Football Shirt

**Cut Size -**

**Width:** 219.5mm

**Height:** 200mm

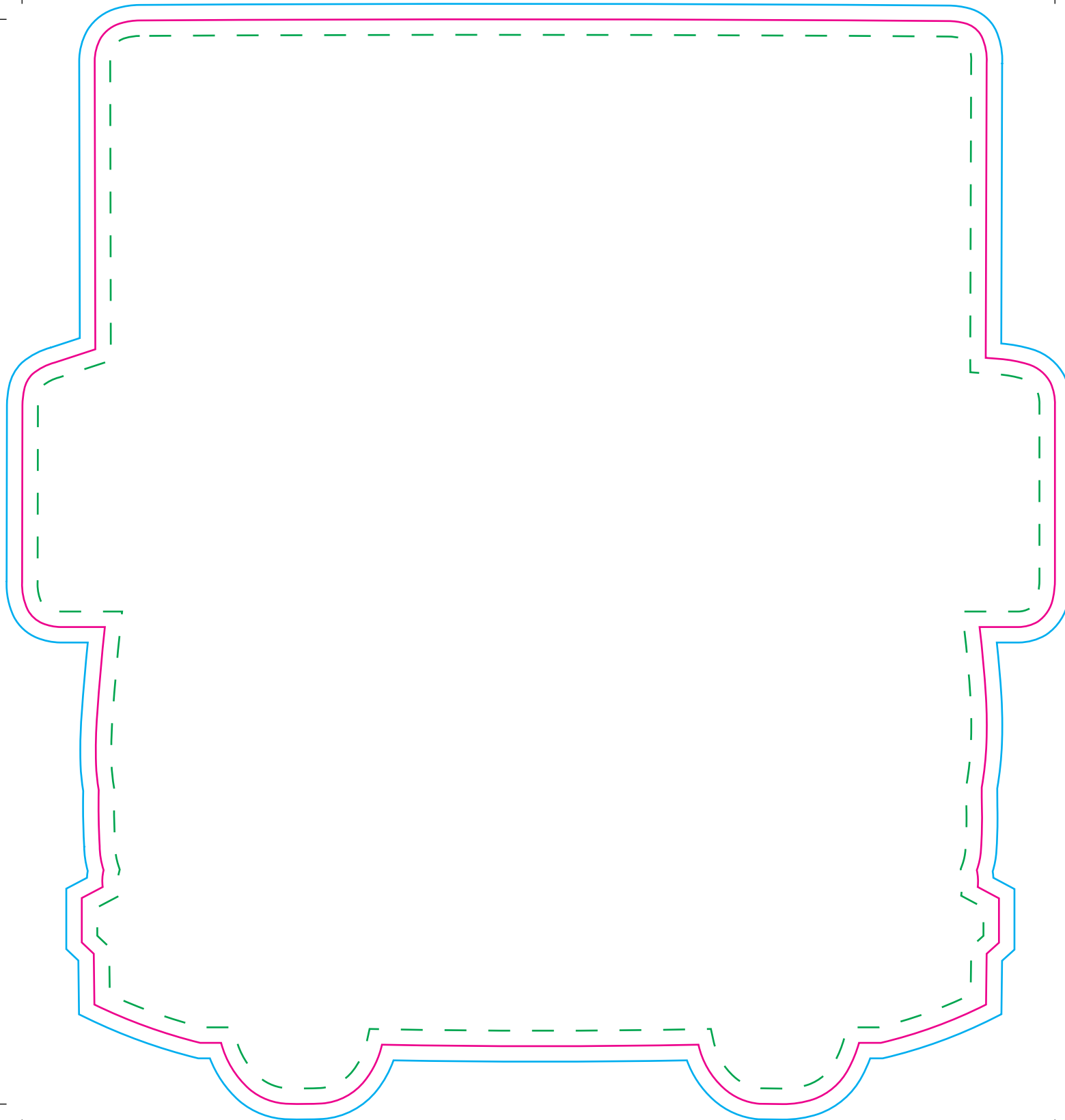
**Artwork with Bleed -**

**Width:** 225.5mm

**Height:** 206mm

**--- Please keep all live matter such as text, logos and other important images within this area.**

**This dieline represents a current finishing tool. Any alterations to this dieline may incur additional charges.**



## Mat

**Tool No:** 3682 & DC0146

**Shape:** Lorry

**Cut Size -**

**Width:** 200mm

**Height:** 210mm

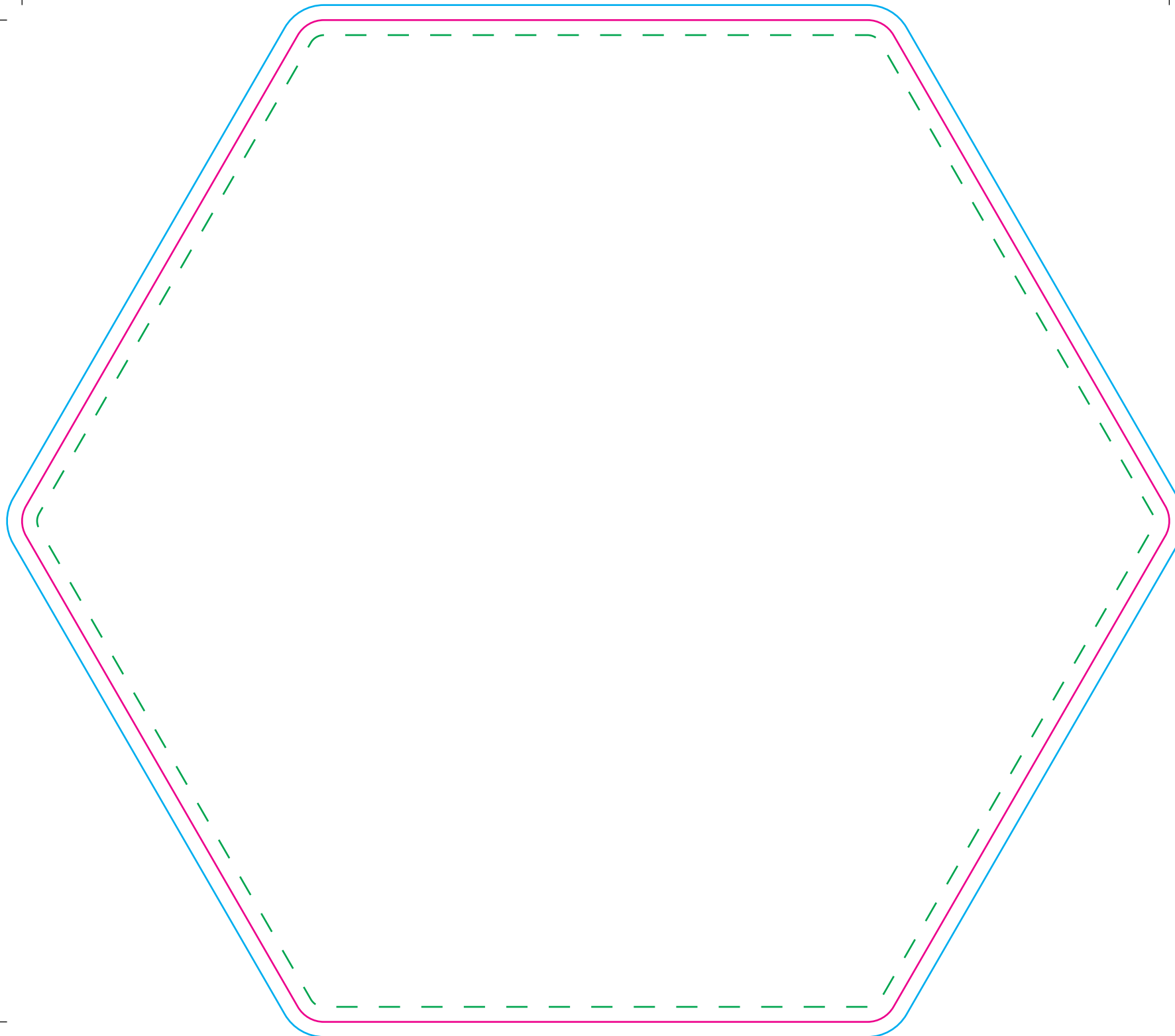
**Artwork with Bleed -**

**Width:** 206mm

**Height:** 216mm

- - - Please keep all live matter such as text, logos and other important images within this area.

**This dieline represents a current finishing tool. Any alterations to this dieline may incur additional charges.**



**Mat**

**Tool No:** 2160 • DC0262 • (2228KA)

**Shape:** Hexagon

**Cut Size -**

**Width:** 229mm

**Height:** 200mm

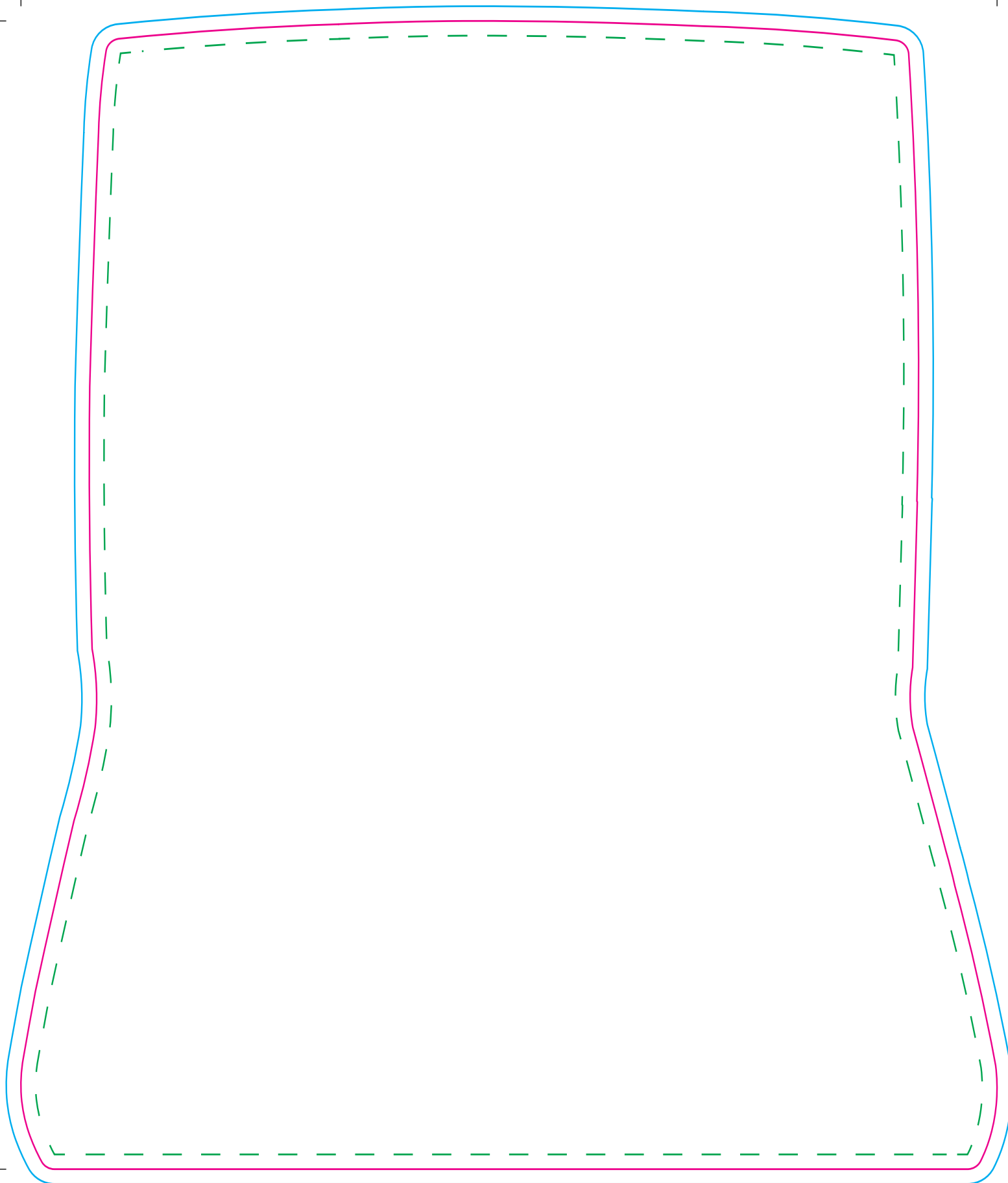
**Artwork with Bleed -**

**Width:** 235mm

**Height:** 206mm

- - - Please keep all live matter such as text, logos and other important images within this area.

**This dieline represents a current finishing tool. Any alterations to this dieline may incur additional charges.**



## Mat

**Tool No:** 1996 • DC0434

**Shape:** Laptop

### Cut Size -

**Width:** 199mm

**Height:** 234mm

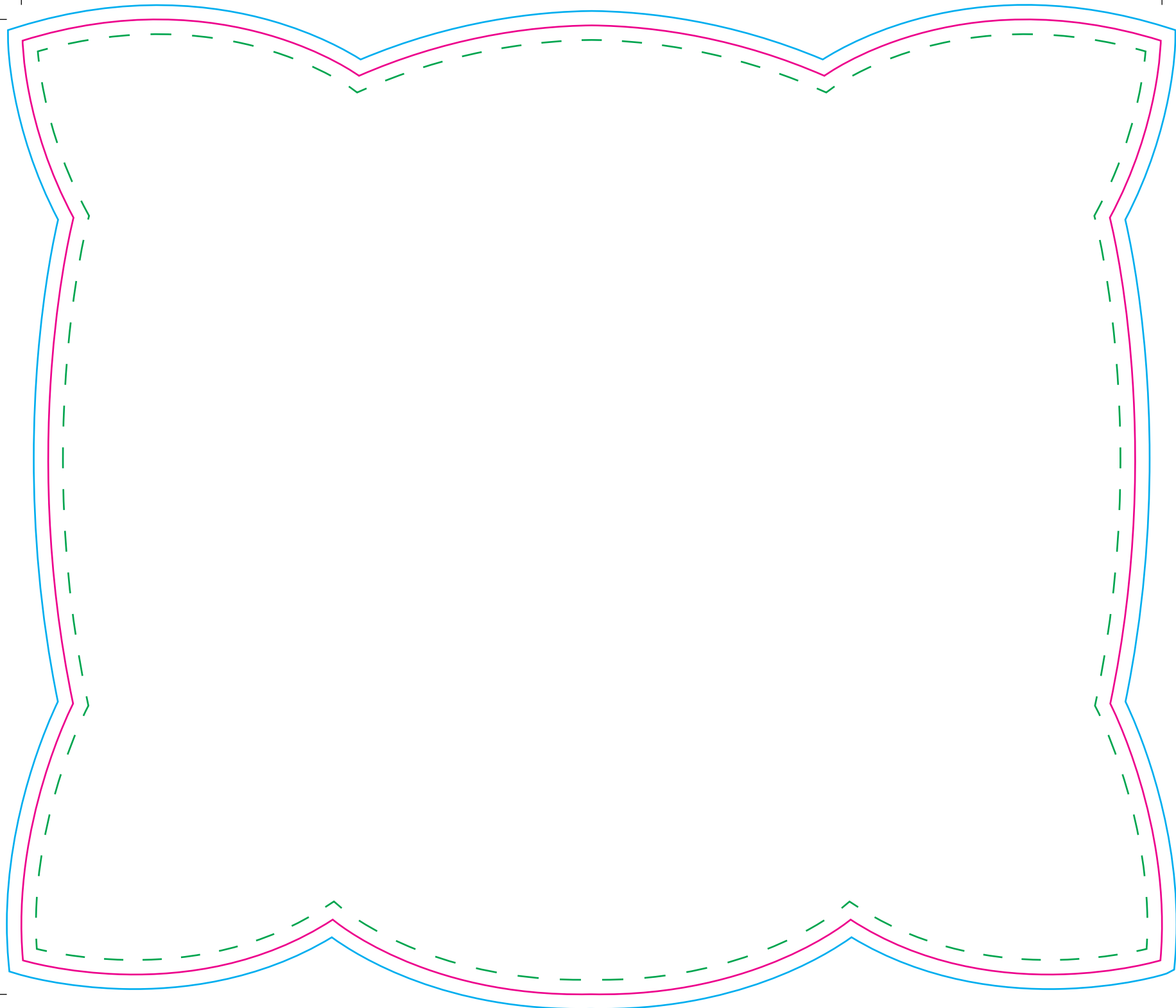
### Artwork with Bleed -

**Width:** 205mm

**Height:** 240mm

- - - Please keep all live matter such as text, logos and other important images within this area.

**This dieline represents a current finishing tool. Any alterations to this dieline may incur additional charges.**



**Mat**

<b>Tool No:</b>	3338 • DC0327
<b>Shape:</b>	Pillow
<b>Cut Size -</b>	
<b>Width:</b>	235mm
<b>Height:</b>	201mm
<b>Artwork with Bleed -</b>	
<b>Width:</b>	241mm
<b>Height:</b>	207mm

--- Please keep all live matter such as text, logos and other important images within this area.

**This dieline represents a current finishing tool. Any alterations to this dieline may incur additional charges.**