

HardTop Mat

HardTop mouse mats are the original and best mouse mat, the best selling mouse mat in Europe.

Everlasting under-surface print combined with a non slip foam base provides exceptional value for money.

This mat will last almost indefinitely. A selection of standard shapes are available. Mouse mats feature a large print area for branding and promotional messages.



Key Product Information

| | |
|-------------------------|-------------------------------------|
| Product Code: | 11001 |
| Commodity Code: | 3926100000 |
| MOQ: | 100 |
| Size: | See Artwork Requirements |
| Available Thickness: | 3mm or 5mm |
| Branding Area: | Within dimensions |
| Branding Method: | Screen Print or 4 Colour Process |
| Material: | PVC laminated to a foam base |
| Made In: | UK |
| PDF Proof: | 24-48 Hours |
| Express Service | 48 Hour |
| Available: | |
| Printed Proof Leadtime: | 3 Working days |
| Leadtime: | 10 Working days from proof approval |
| Colour: | N/A |
| Weight: | 44g |

Packaging and Other Information

| | |
|------------------------|---|
| No Per Carton: | 500 |
| Packaging Details: | 443 x 520 x 545mm |
| Carton Weight: | 22Kg |
| Standard Packaging: | Bulk Packed |
| Alternative Packaging: | Mailing Sleeves, Shrink Wrapped, Bag with Header Card, Envelope |

Recommendations and Limitations

Please note that the MOQ for 5mm thick foam is 3,500 with a lead-time of 15 days from proof approval.

Suitable for all kinds of mice. Lasts much longer than paper laminated mats; a minimum of 12 months.

Ideal For: Postal Campaigns, IT Companies, Educational Organisations, Pharmaceutical, Recruitment

HardTop Mat

Sizes available: Rectangle 200mm x 235mm, Square 200mm x 200mm, Oval 200mm x 235mm, Circle 200mm diameter, House 230mm x 195mm, Heart 200mm x 235mm, Phone 233mm x 185mm, T-Shirt 220mm x 200mm, Truck 200mm x 210mm, Hexagon 230mm x 200mm, Laptop 200mm x 235mm, Pillow 200mm x 235mm

Screen Print:

- Editable EPS file
- Image saved at 100% size or larger
- Pantone® references supplied for colours
- Fonts supplied or text saved as curves

Full colour:

- All graphics should be supplied as high resolution CMYK files at a minimum of 300dpi
- All design components must be supplied and clearly identified. This includes Tiff, EPS and PDF files; all printer fonts used in the main file & imported graphics.

Regardless of print method:

- Allow 10mm bleed all around the design.
- Artwork to be emailed with your order number and company name in the reference line or supplied on CD with same information clearly labelled.

Full detailed guidelines including limitations & recommendations are available for each printing method on request.

QR Codes - Please note that the print process and substrates used in the production of this item may not always allow QR codes, if present on your artwork, to function correctly. When approving your proof, you are accepting that this may be the case and as such accept full liability for any malfunction of the QR code.

Please note that to provide you the highest quality product, offering you exceptional value for money, we print your design straight on to the under surface of our tough mark resist top material and laminate directly to a foam base. This makes our patent protected HardTop mouse mats virtually indestructible under normal use. This can mean that if you have large areas of solid white in your designs, whites will appear duller than if you opt for a paper laminated mat where the white of the paper will represent the white areas. Paper laminated mouse mats are not as durable as our bestselling HardTop mats. If you need help choosing the right product for your client's design please feel free to contact our sales team who will be able to offer advice.

See the following page(s) for the artwork templates for this product.

All information correct at time of publication. Whilst we endeavour to maintain the accuracy of this document, details may change without notice.

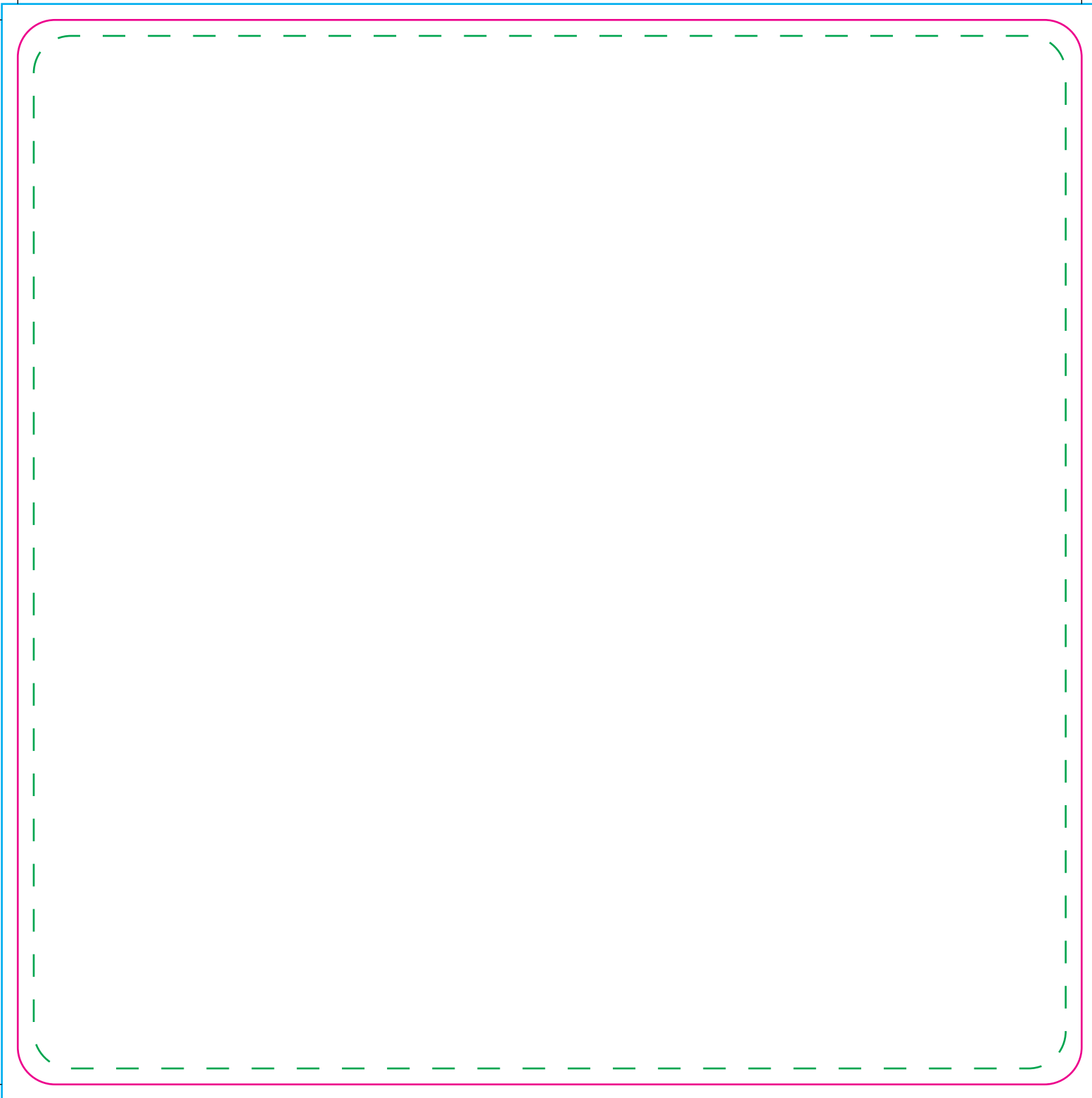


Standard Mat

| | |
|-----------------------------|-----------|
| Tool No: | 235 |
| Shape: | Rectangle |
| Cut Size - | |
| Width: | 235mm |
| Height: | 200mm |
| Artwork with Bleed - | |
| Width: | 241mm |
| Height: | 206mm |

--- Please keep all live matter such as text, logos and other important images within this area.

This dieline represents a current finishing tool. Any alterations to this dieline may incur additional charges.



Mat

Tool No: 867 & DC0006

Shape: Square

Cut Size -

Width: 200mm

Height: 200mm

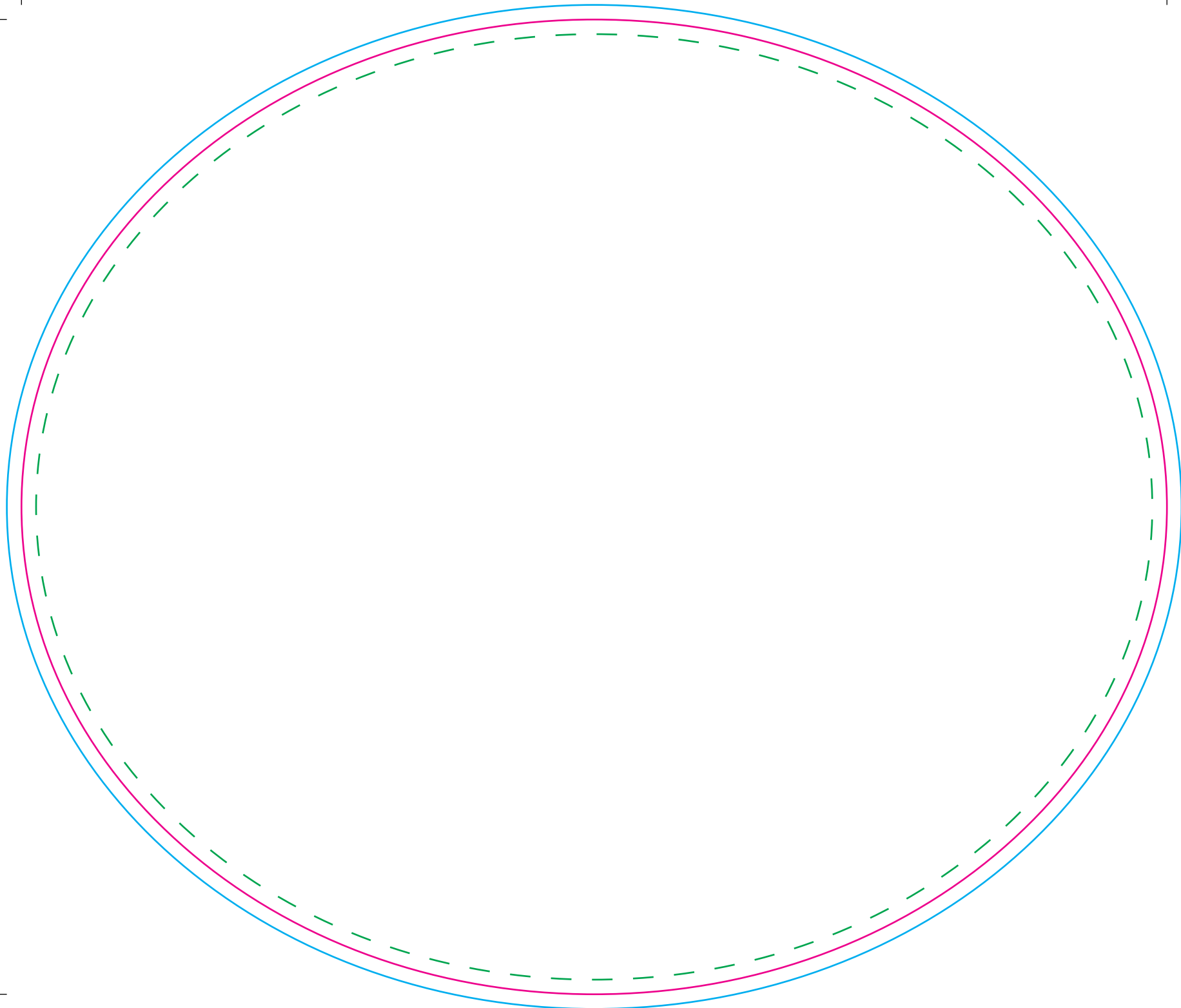
Artwork with Bleed -

Width: 206mm

Height: 206mm

- - - Please keep all live matter such as text, logos and other important images within this area.

This dieline represents a current finishing tool. Any alterations to this dieline may incur additional charges.

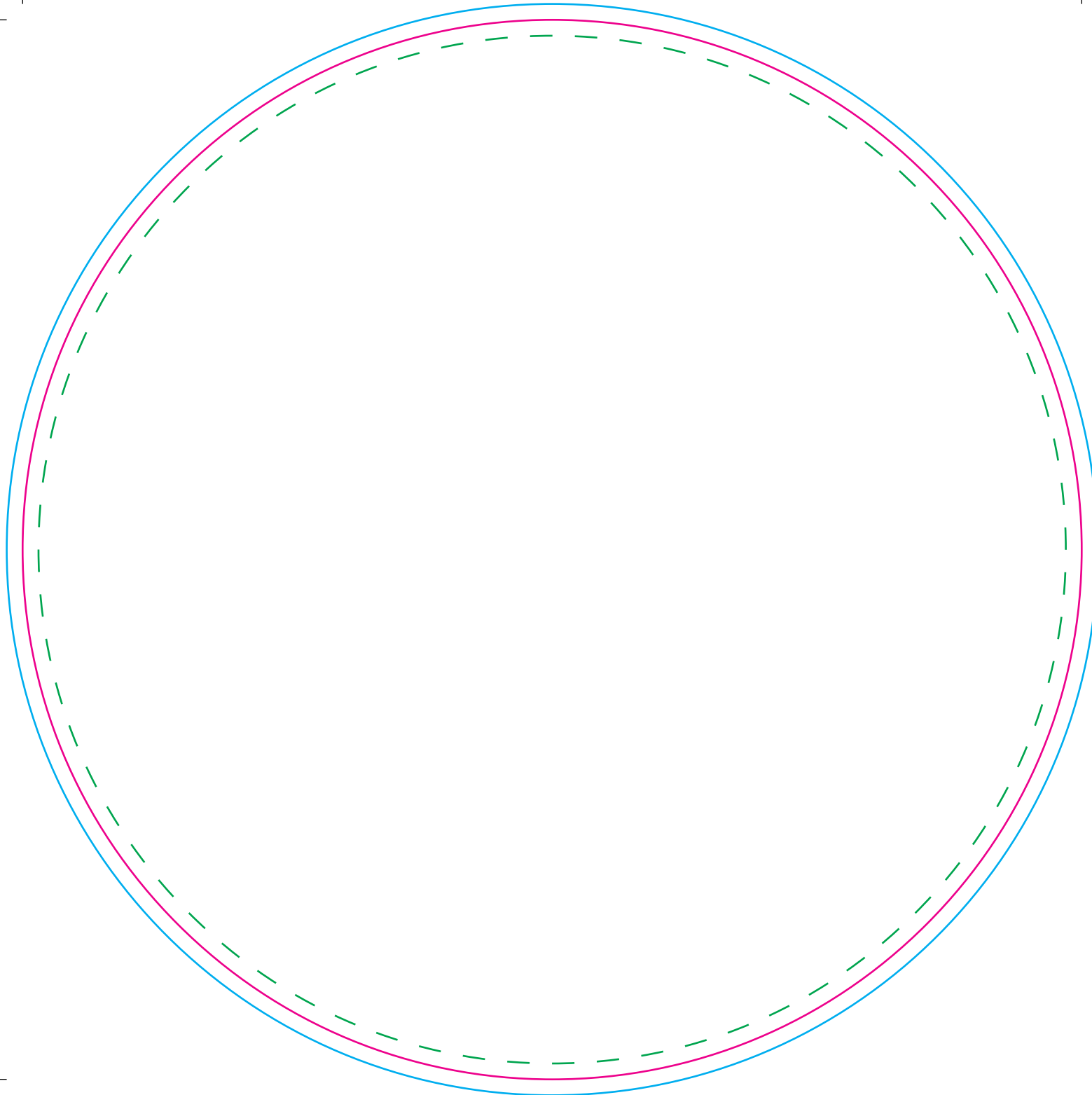


Mat

| | |
|-----------------------------|---------------|
| Tool No: | 1090 & DC0173 |
| Shape: | Oval |
| Cut Size - | |
| Width: | 235mm |
| Height: | 200mm |
| Artwork with Bleed - | |
| Width: | 241mm |
| Height: | 206mm |

--- Please keep all live matter such as text, logos and other important images within this area.

This dieline represents a current finishing tool. Any alterations to this dieline may incur additional charges.



Mat

Tool No: 862 & DC0005

Shape: Circle

Cut Size -

Width: 200mm

Height: 200mm

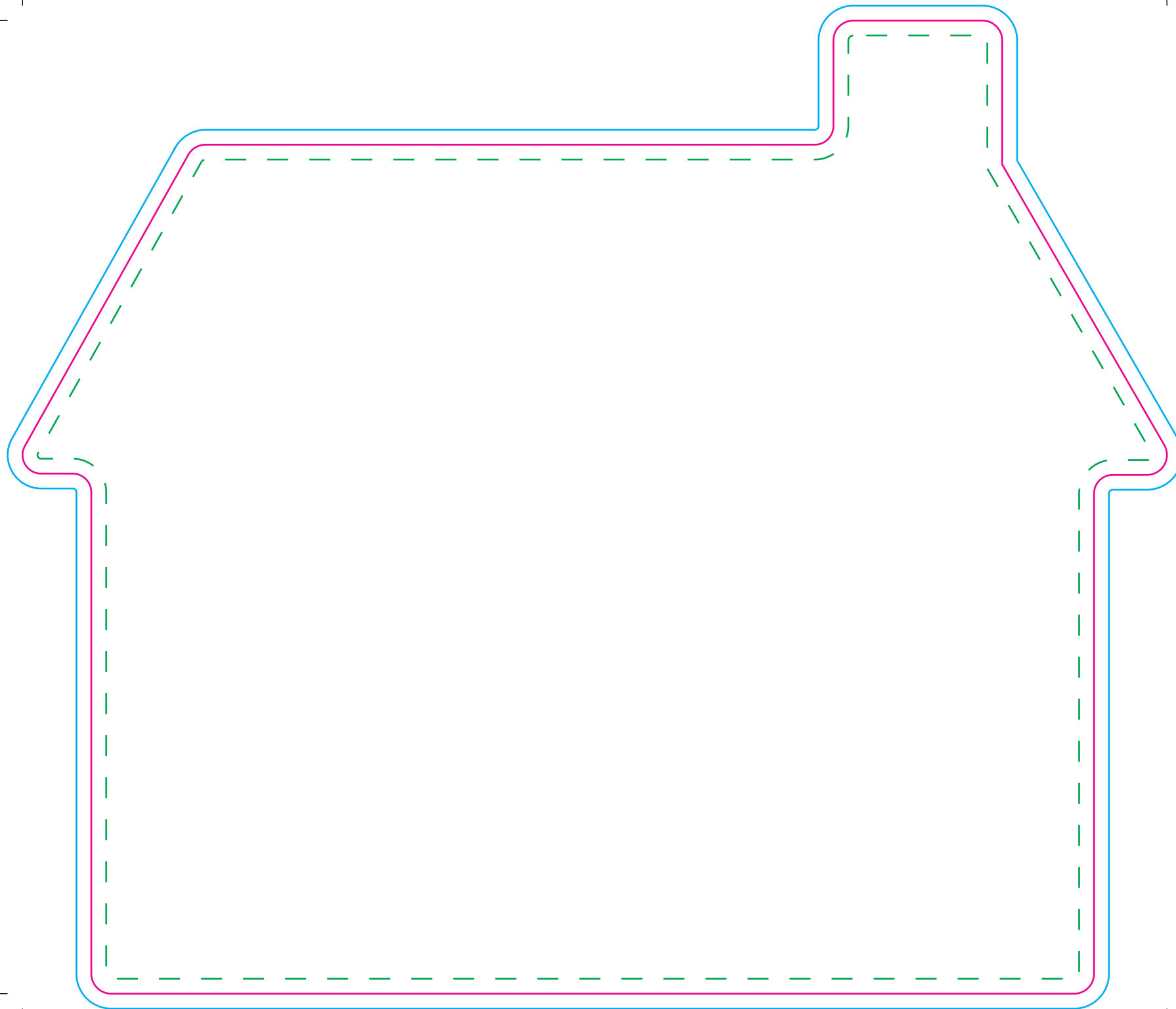
Artwork with Bleed -

Width: 206mm

Height: 206mm

- - - Please keep all live matter such as text, logos and other important images within this area.

This dieline represents a current finishing tool. Any alterations to this dieline may incur additional charges.



Mat

Tool No: 3591 & DC0221
Shape: House - Chimney Right

Cut Size -

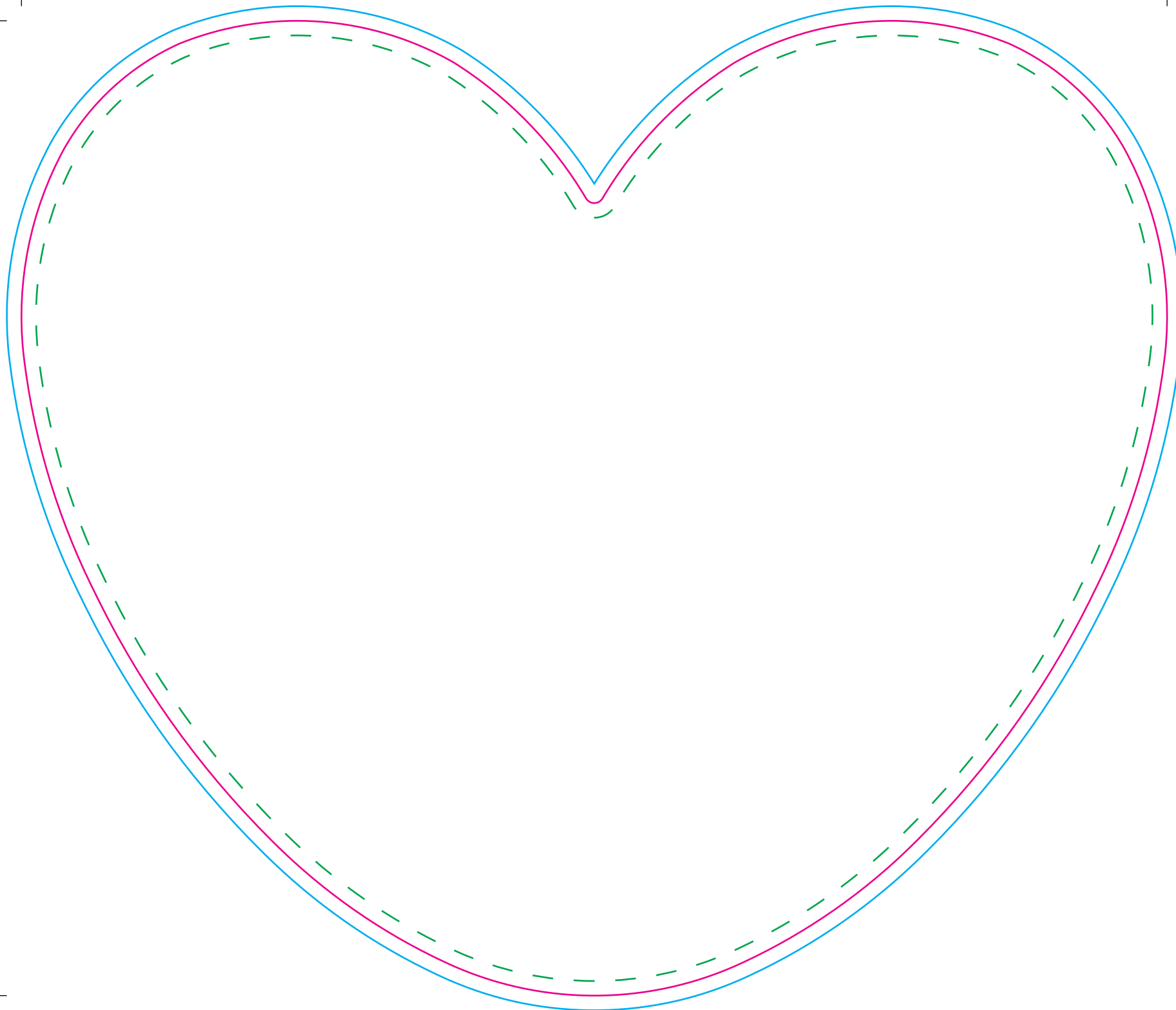
Width: 230.5mm
Height: 196mm

Artwork with Bleed -

Width: 236.5mm
Height: 202mm

--- Please keep all live matter such as text, logos and other important images within this area.

This dieline represents a current finishing tool. Any alterations to this dieline may incur additional charges.



Mat

Tool No: 3489 & DC0312

Shape: Heart

Product Size -

Width: 235mm

Height: 200mm

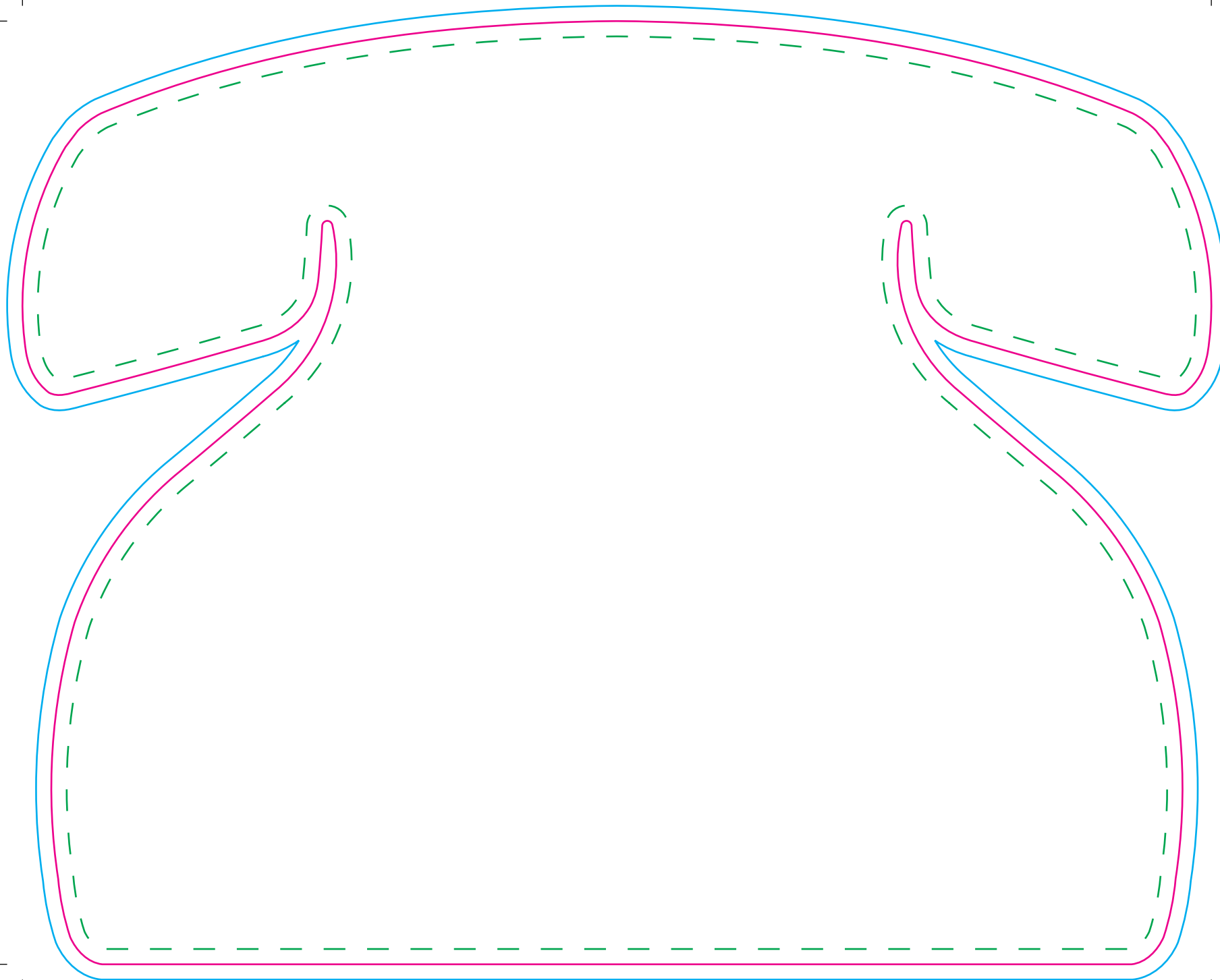
Artwork with Bleed -

Width: 241mm

Height: 206mm

--- Please keep all live matter such as text, logos and other important images within this area.

This dieline represents a current finishing tool. Any alterations to this dieline may incur additional charges.



Mat

Tool No: 2423 & DC0067

Shape: Telephone

Cut Size -

Width: 233mm

Height: 185mm

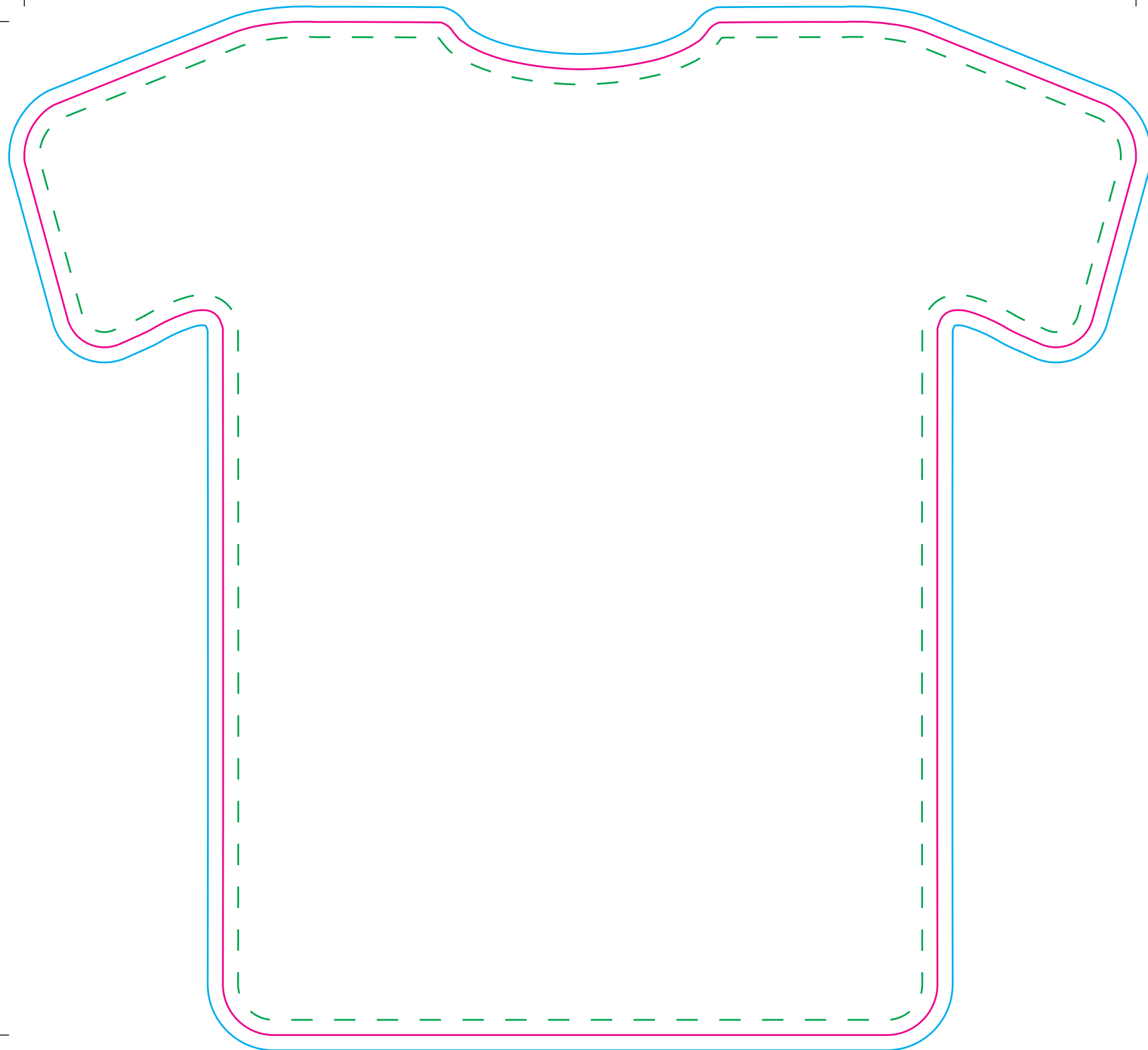
Artwork with Bleed -

Width: 239mm

Height: 191mm

- - - Please keep all live matter such as text, logos and other important images within this area.

This dieline represents a current finishing tool. Any alterations to this dieline may incur additional charges.



Mat

Tool No: 3375 & DC0056

Shape: Football Shirt

Cut Size -

Width: 219.5mm

Height: 200mm

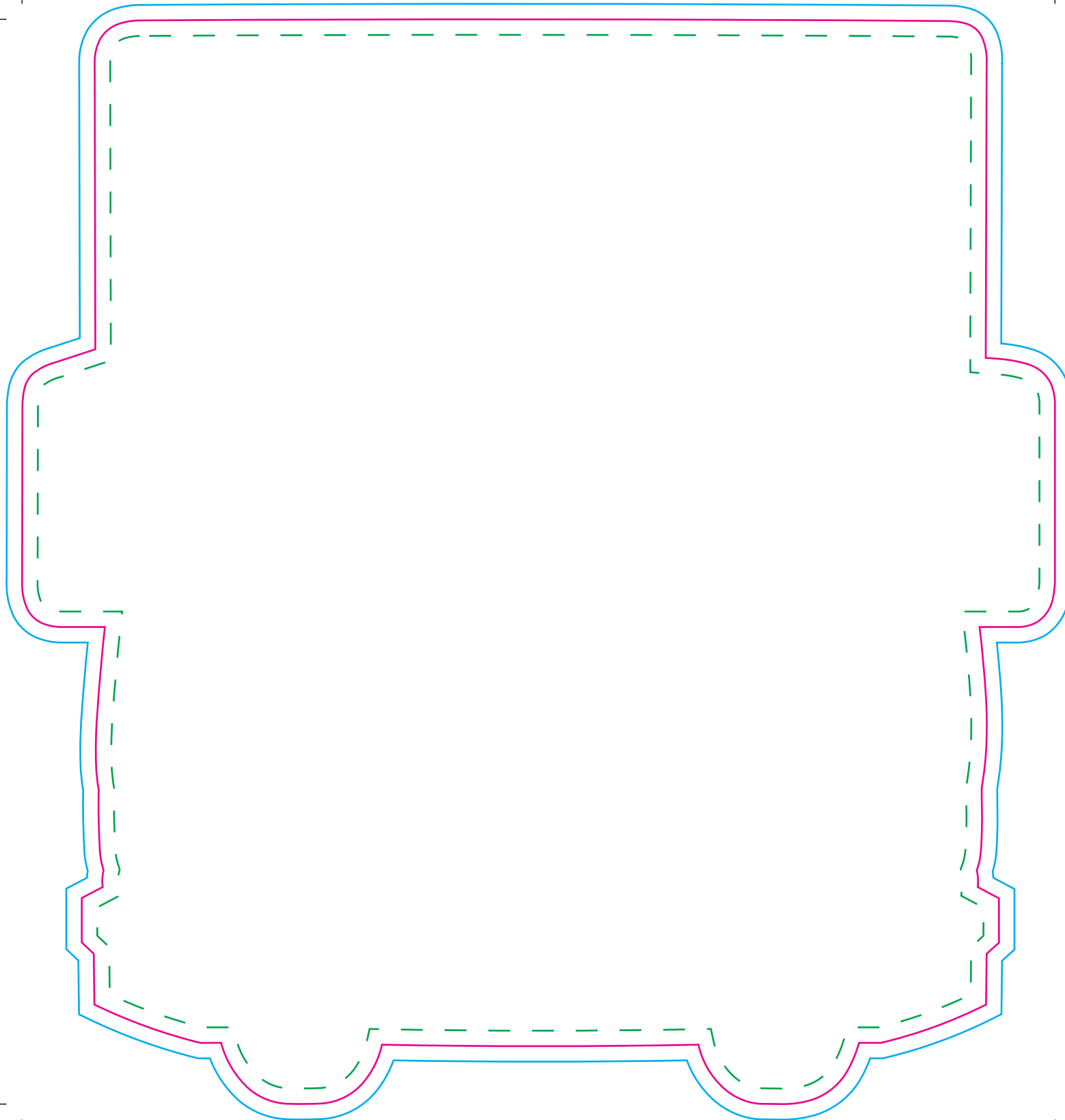
Artwork with Bleed -

Width: 225.5mm

Height: 206mm

- - - Please keep all live matter such as text, logos and other important images within this area.

This dieline represents a current finishing tool. Any alterations to this dieline may incur additional charges.



Mat

Tool No: 3682 & DC0146

Shape: Lorry

Cut Size -

Width: 200mm

Height: 210mm

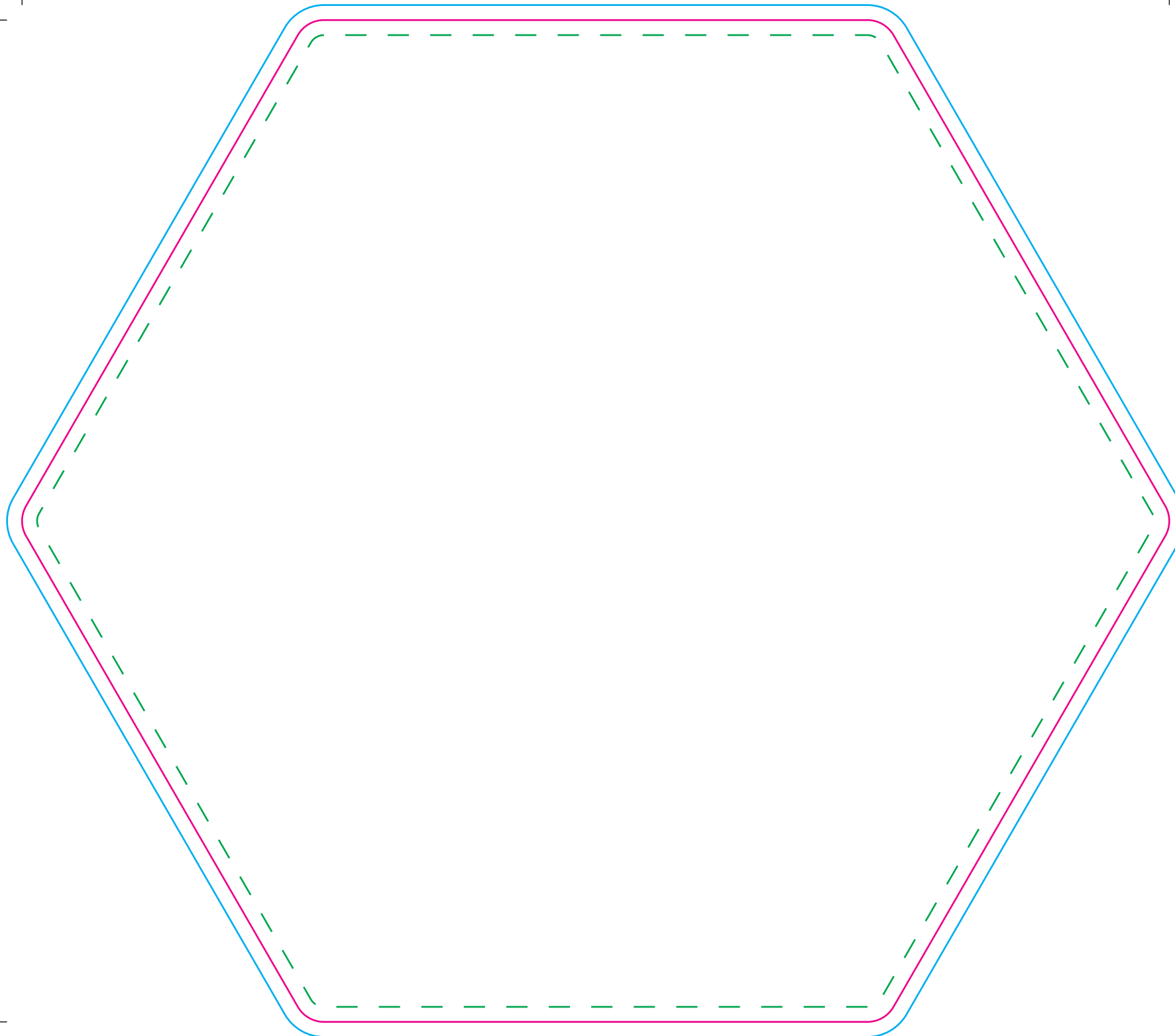
Artwork with Bleed -

Width: 206mm

Height: 216mm

- - - Please keep all live matter such as text, logos and other important images within this area.

This dieline represents a current finishing tool. Any alterations to this dieline may incur additional charges.



Mat

Tool No: 2160 • DC0262 • (2228KA)

Shape: Hexagon

Cut Size -

Width: 229mm

Height: 200mm

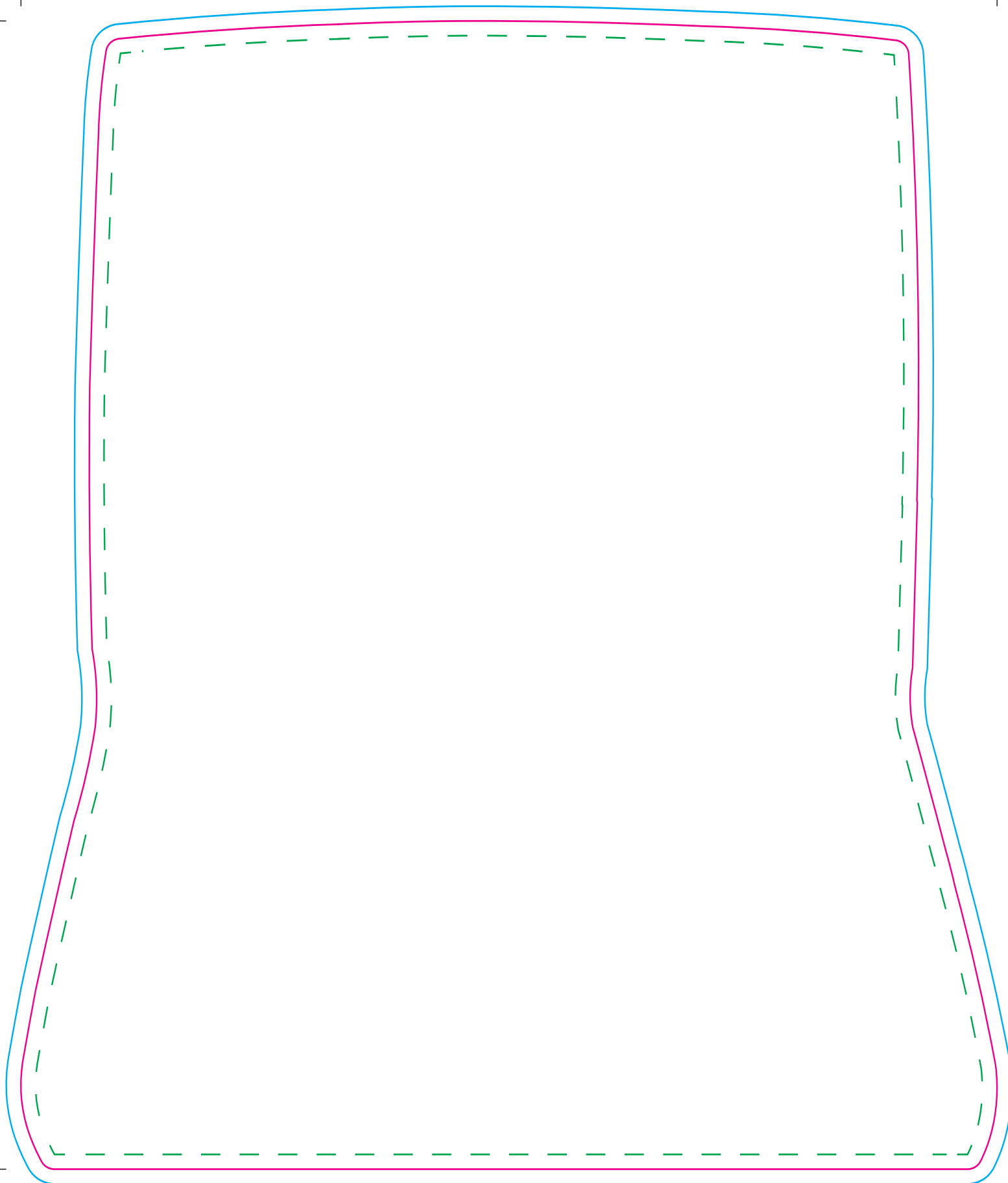
Artwork with Bleed -

Width: 235mm

Height: 206mm

- - - Please keep all live matter such as text, logos and other important images within this area.

This dieline represents a current finishing tool. Any alterations to this dieline may incur additional charges.



Mat

Tool No: 1996 • DC0434

Shape: Laptop

Cut Size -

Width: 199mm

Height: 234mm

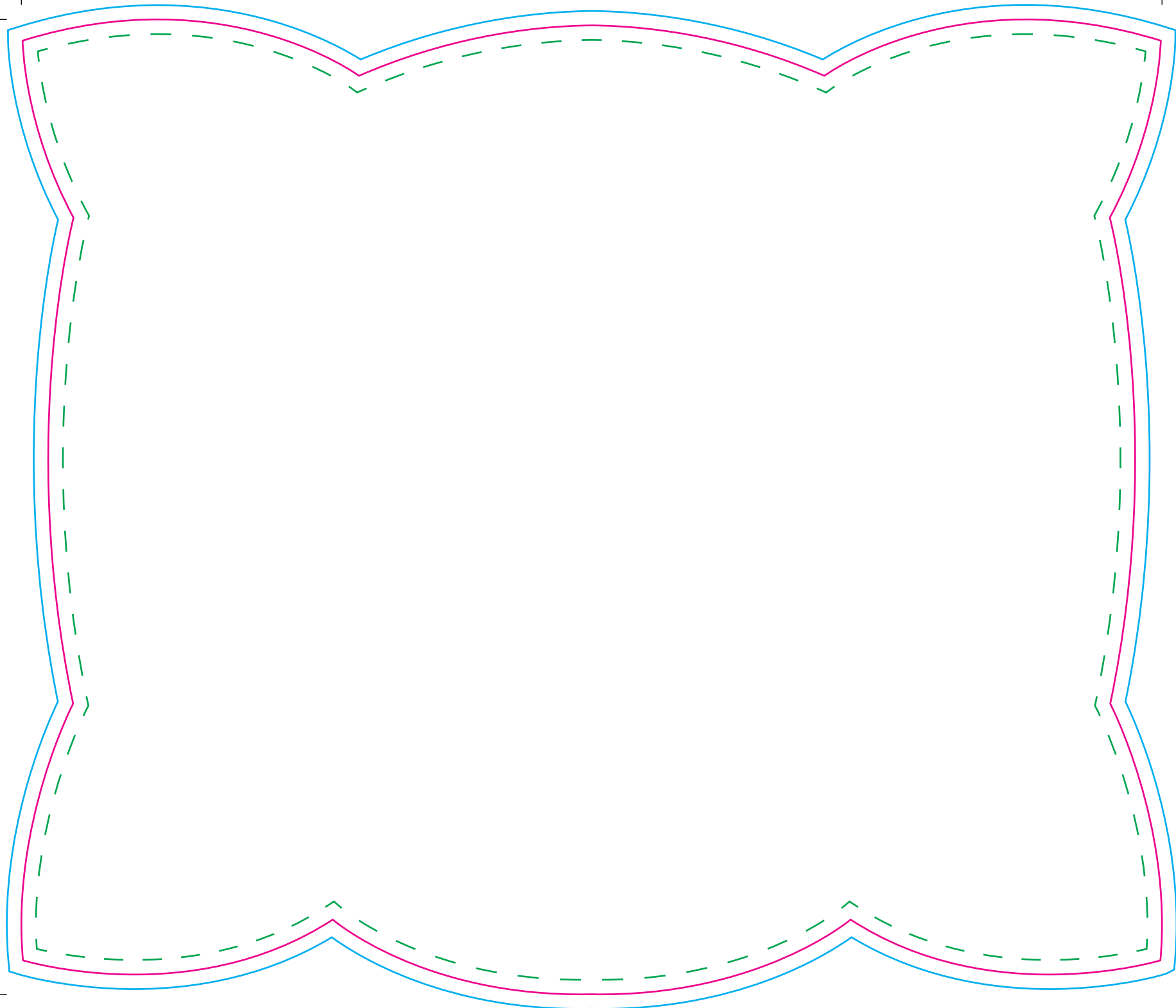
Artwork with Bleed -

Width: 205mm

Height: 240mm

- - - Please keep all live matter such as text, logos and other important images within this area.

This dieline represents a current finishing tool. Any alterations to this dieline may incur additional charges.



Mat

| | |
|-----------------------------|---------------|
| Tool No: | 3338 • DC0327 |
| Shape: | Pillow |
| Cut Size - | |
| Width: | 235mm |
| Height: | 201mm |
| Artwork with Bleed - | |
| Width: | 241mm |
| Height: | 207mm |

--- Please keep all live matter such as text, logos and other important images within this area.

This dieline represents a current finishing tool. Any alterations to this dieline may incur additional charges.